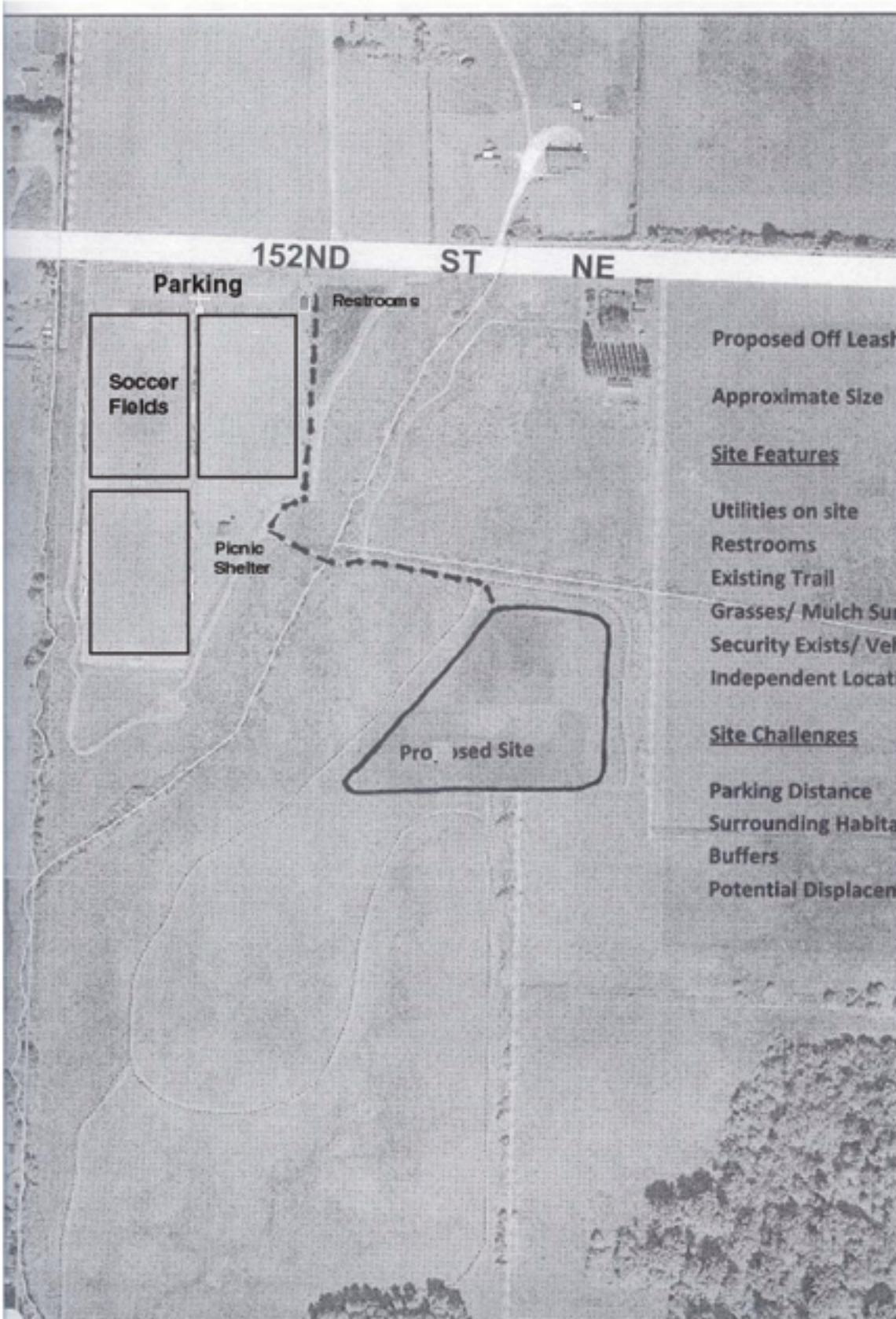


**Proposed Marysville Off-Leash Dog Park
Strawberry Fields Athletic Complex**
6100 152nd St. NE, Marysville



Proposed Off Leash Dog Park Site

Approximate Size 6 acres

Site Features

Utilities on site

Restrooms

Existing Trail

Grasses/ Mulch Surfacing Exists on site

Security Exists/ Vehicle Access

Independent Location

Site Challenges

Parking Distance

Surrounding Habitat

Buffers

Potential Displacement for Future Field(s) Use